

MENU DASHBOARDS



INTRODUCTION

The EFACS E/8 Version 6 menu system provides Dashboards to view KPIs and reports. These dashboards can either be BIRT reports or Microsoft Power BI reports.

WHAT IS BIRT?

BIRT is an open source technology platform used to create data visualisations and reports that can be embedded into rich client and web applications.

WHAT IS MICROSOFT POWER BI?

Power BI is Microsoft's latest suite of business analytics tools, used to analyse data and share insights. It allows you to monitor your business and get answers quickly, with rich dashboards available on mobile and desktop devices.

Power BI allows you to create stunning interactive reports and transforms your company's data into rich visuals for you to collect and organise so you can focus on what matters to you.

AT A GLANCE

EFACS E/8 Version 6 embeds KPIs and reporting into menu dashboards. These dashboards can either be BIRT reports or Microsoft Power BI reports.



PRICING

BIRT is a free, open source product. When a report is launched it is generated using real-time data.

Microsoft Power BI is an element of Office 365. There is a free version of Power BI, and a subscription based version called Power BI Pro.

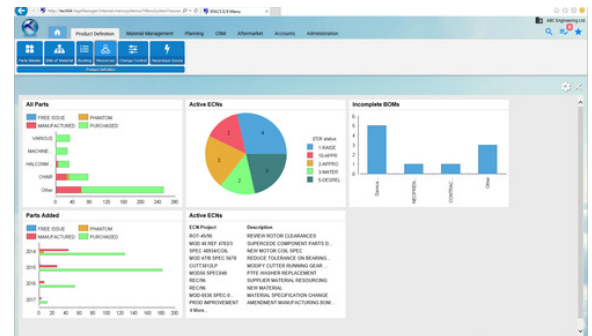
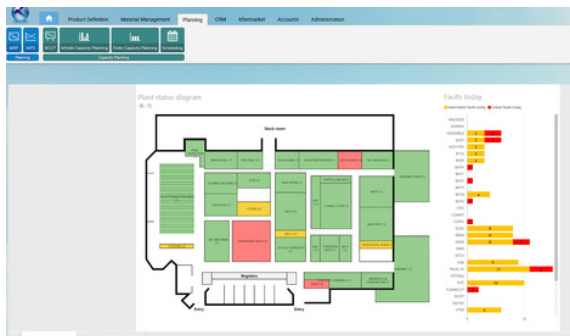
The free version of Power BI allows daily synchronisation of data. With the Pro version this can be hourly. The Pro version also allows you the use of Custom Visuals, a gallery of interesting and attractive visualisations created by the Power BI community.

There is a freely available Power BI Designer program that you can use to create reports and dashboards.

There are Android and iOS apps available for mobile viewing of reports/ dashboards. EFACS Mobile CRM & SFDC applications provide functionality to view Power BI and BIRT reports.



MENU DASHBOARDS



KEY FEATURES

- Eye-catching, modern visualisations to reflect different types of data – more than your typical bar and pie charts.
- Personalised Information – Individual users and roles can view dashboards specific to their job function.
- Cross-filter and cross-highlight between charts on the same dashboard.
- Full drill-down to source data.
- Multiple data sources can be consolidated – EFACS data, spreadsheets, Google Analytics, etc.

BUSINESS BENEFITS

- Graphical dashboards present information in a format that enables efficient and more informed decision making.
- Information and key performance metrics can be easily shared around the business.
- Anomalies and early warning signals can be spotted quicker and therefore actioned in a more timely manner.
- Gain insights into up-selling and cross-selling opportunities by mining your customer data.
- Integration of data from multiple sources removes barriers and creates an integrated organisation.

INTEGRATION WITH THE EFACS MENU

BIRT and Microsoft Power BI have been integrated into the EFACS E/8 Version 6 menu.

Based on their permissions and roles, users can select different dashboards to display within different modules in the system.